

Compact Data Logger [Condition Catcher S]

Easy Measure

【Measurement Made Easy】

Ready to use
Easy to use for anyone
Carry & use anywhere

Small data logger for measuring internal status during machine operation.



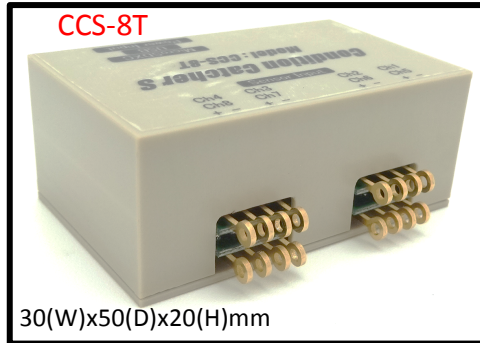
CCS-1S

30(W)x30(D)x17.2(H)mm



CCS-4S

30(W)x50(D)x20(H)mm



CCS-8T

30(W)x50(D)x20(H)mm

Condition Catcher S has been developed based on the concept of “a compact data logger” that can measure the internal status of machines in operation, collecting data from strain gauges and temperature sensors such as thermocouples (TC).

[Features]

- 3 types (see the product list on the right)
- Strain: 1-4 gauges (specify at order)
- Thermocouples: B/E/J/K/N/R/S/T
- Large Memory Size (μSDXC: 64GB)
- μUSB interface
- Vibration Resistance (for installing on rotating body)
- Operating Temperature: 0-60 deg.C
- Centrifugal: 100G
- Vibration: ±10G (5-55Hz)

Product List

Input	Channels	Model
Strain Gauge	1ch	CCS-1S
Strain Gauge	4ch	CCS-4S
Thermocouple	8ch	CCS-8T

Approximate Data Acquisition Time (CCS-1S)

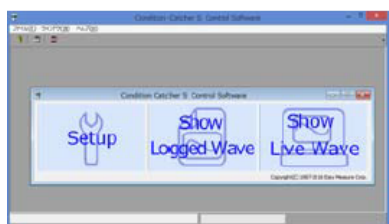
Samples per sec.	2,000	1,000	100	10
Time in hours	4,000	8,000	80,000	800,000

Measurement Software (included)

◆ Online Measurement

- The waveform of the data sent from the Data Logger can be displayed in the monitor in realtime – down to 500us sampling time.
- The measured data can be stored to HDD via USB – down to 500us sampling time.
- The stored data can be displayed in the monitor, with X-axis as time and Y-axis as amplitude, for closer observation on the screen operations.
- The measured data can be converted and stored in a different format: CSV that can be read by commercially available spreadsheet program.

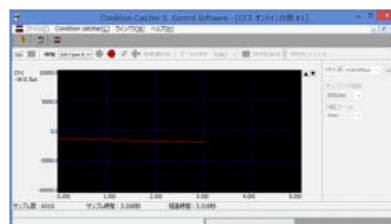
Initial Screen



Online Measurement Setting Screen



Online Measurement Screen



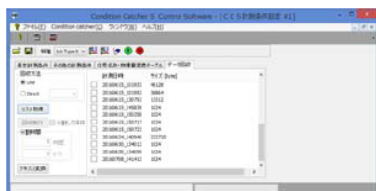
◆ Offline Measurement

- The measurement conditions can be set and downloaded to the Data Logger – various measurement conditions can be set easily on PC screen.
- Data can be collected from the Data Logger and stored on the storage media – the whole measured data in μSDXC can be stored on HDD.
- The stored data can be displayed in the monitor, with X-axis as time and Y-axis as amplitude, for closer observation on the screen operations.
- The measured data can be converted and stored in a different format: CSV that can be read by commercially available spreadsheet program.

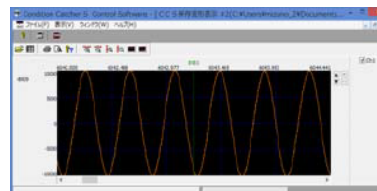
Offline Measurement Setting Screen



Offline Measurement Data List



Stored Waveform Display Screen



[Specifications]

Model	CCS-1S	CCS-4S	CCS-8T
Number of channels	1 channel	4 channels	8 channels
Sensor types	Strain gauges or other converters		Thermocouples
Input	Specify at order: Single gauge (2 or 3 wire: 120Ω), two gauge (120Ω), or four gauge (120-1kΩ)		B/E/J/K/N/R/S/T
Measurement range	±10,000μe (over ±10,000μe can be manufactured)		Full Range
Accuracy	0.05% RO		±1.5 deg.C
Resolution	1/40,000 Auto zero function		0.1 deg.C
Input Connection	Dedicated connector (Power: 4pin x1, signal: 6pinx1) and dedicated cable	Dedicated connector (Power: 4pin x1, signal: 6pinx4) and dedicated cable	Round terminals (direct soldering)
Sampling speed	2,000/1,000/100/10/1/0.1 times per sec.		50/10/1/0.1 times per sec.
Low-pass filter	Cut-off characteristics: -6dB/OCT, Cut-off frequency: 1kHz		
Data memory	μSDXC: 64GB for data storage		
USB function	USB 2.0 Full-speed for PC communication (download, measurement monitor, and power)		
Clock	Backed up by lithium battery for a short period of time (time specified sampling by setting)		
Operating Environment	Temp:0-60 deg.C, Humidity: 10-85%RH (no-condensation, vibration: 10G (5-55Hz), Centrifugal: >100G		
Power/ Consumption	DC3.6-6V, <0.2W	DC3.6-6V, <0.3W	DC3.6-6V, <0.3W
Dimensions/ Weight	30(W)x30(D)x17.2(H)mm/20g	30(W)x50(D)x20(H)mm/36g	30(W)x50(D)x20(H)mm/36g
Delivered items	Data Logger, USB cable, AC Adaptor & Cable (15cm), Sensor input cable (loose end: 15cm), and Measurement Software (Windows 8)		

[Battery Box (Type AA x 8) and Run Time]

Type	4 batteries in series, and 2 in parallel (Eneloop equivalent)				8 batteries in parallel Lithium Battery (Disposable)		
Model (Capacity)	L-BOX-42 (4.5V – 3.8Ah)				L-BOX-8Li (3.4V - 20Ah)		
Connection	Sampling	CCS-1S	CCS-4S	CCS-8T	CCS-1S	CCS-4S	CCS-8T
TC	50Hz	-	-	180hrs	-	-	720hrs
120Ω	2kHz	80hrs	30hrs	-	320hrs	120hrs	-
120Ω	1Hz	180hrs	65hrs	-	720hrs	260hrs	-
350Ω	2kHz	100hrs	50hrs	-	400hrs	200hrs	-
350Ω	1Hz	250hrs	120hrs	-	1,000hrs	480hrs	-

Battery Box (65[W]x72[D]x37[H]mm)



Power Cable



Input Cable (Strain)



[Model Name]

TC: Thermocouple

Products	Model	Notes
1ch Strain	CCS-1S-*	*: Input gauge setting 1G2: single gauge, 2 wire (120Ω) 1G3: single gauge, 3 wire (120Ω) 2G: two gauge (120Ω) 4G: four gauge (120Ω-1kΩ)
4ch Strain	CCS-4S-*/*/*/*	
8-ch TC	CCS-8T	-
Power Cable	CCS-P-0.15m	Length can be specified (standard: 15cm)
Input cable (Strain)	CCS-S-0.15m	Length can be specified (standard: 15cm)
Power Box①	LBOX-42	4 series/ 2 parallel, Power drop protection, Parallel diode, Battery is not included.
Power Box②	LBOX-8Li	8 parallel, Power drop protection, Parallel diode, Lithium batteries (LS14500) are included.

Any part or all of the contents of this catalog should not be copied, duplicated, or reprinted without permission. Customization services are available. Please contact us.

<p style="text-align: center;">Sensor is source of technology Easy Measure Co., Ltd. 2-11-16 Itazuke, Hakata-ku, Fukuoka-shi, Fukuoka, 812-0888, Japan PHONE: +81-92-558-0314 FAX: +81-92-558-0324 E-mail: info@easy-measure.co.jp http://www.easy-measure.co.jp/en/</p>	<p style="text-align: center;">Distributor</p>
--	---